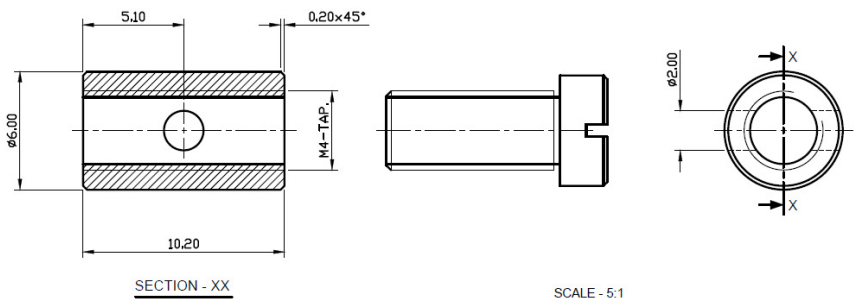


Solderless Nipples

Mild Steel

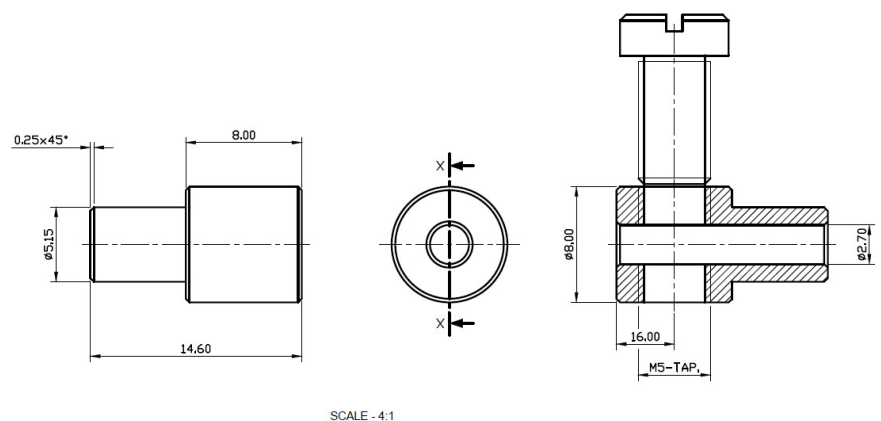
- **Material:** EN-1A leaded mild steel

NPL1



Top Screw, Barrel Type - 6mm outer diameter with 2mm hole.

NPL2



Side Screw, Pear Type - 7mm outer with 2mm hole diameter.

Solderless Nipples

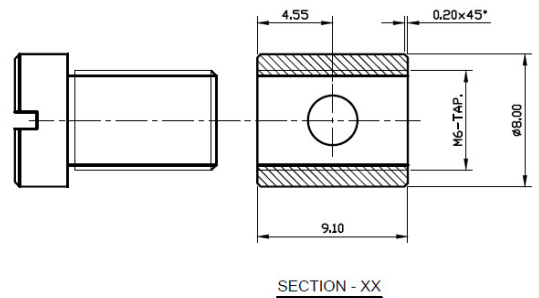
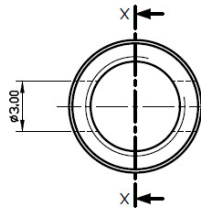
Mild Steel

- **Material:** EN-1A leaded mild steel

NPL3



Top Screw, Barrel Type - 8mm outer with 2.5mm hole diameter.



SCALE - 4:1